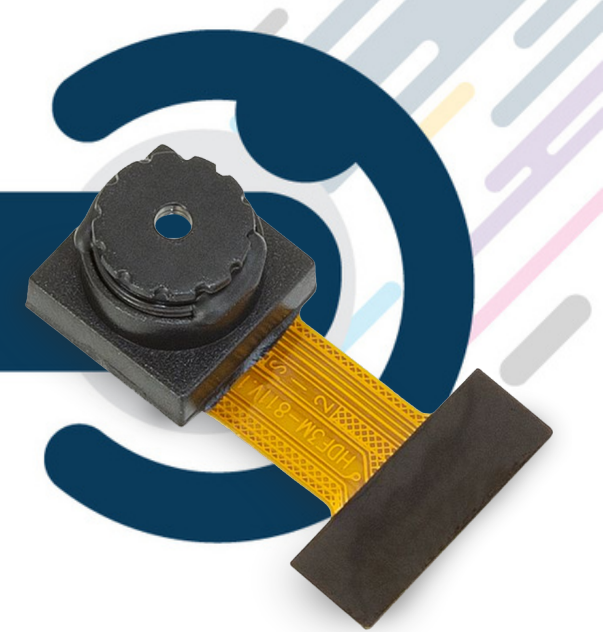


AE-CCM-GS-VD56G3-M-71

1.5MP Monochrome Global Shutter, MIPI, Compact camera module










Overview:

The AE-CCM-GS-VD56G3-M-71 is a Compact camera module equipped with STMicroelectronics VD56G3 1.5-megapixel 1/4" Monochrome global shutter image sensor, that is optimized for visible and near-infrared applications with both embedded auto-exposure and optical flow motion vector computation.

The AE-CCM-GS-VD56G3-M-71 CCM can generate a full resolution (1124 x 1364) image of up to 88 frames per second (FPS).

By using a 71-degree vertical field of view with a fixed focus lens, the AE-CCM-GS-VD56G3-M-71 provides outstanding image quality both in the visible and the near infrared region (850nm, 940 nm) and is highly suitable for a wide variety of applications.

Main features:

	Image Sensor: 1/4" VD56G3 Mono
	Shutter type: Global shutter
	Resolution: 1.5 Megapixel
	Interface: MIPI
	FOV: D84° H57° V71°
	Focus type: Fixed Focus
	Dimensions: 6.5x6.5x3.98mm

★ Customization options:

- Lens (FOV, F#, Distortion etc.)
- Flex PCB length
- Connector/ Pin Assignment

📍 Target application:

- Computer vision
- AR/VR
- Drones
- Barcodes
- Personal and industrial robotics
- Biometrics and gestures